

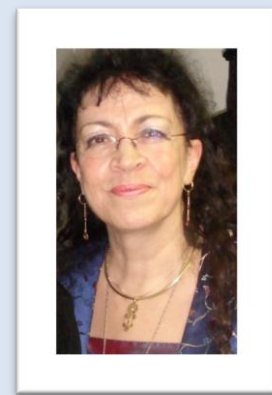
Millennia2015

Women actors of development for the global challenges

Millennia2015, Femmes actrices de développement pour les enjeux mondiaux

Wehealth Scientific and Methodological Committees Members

Marie-Anne Delahaut is Director of research at the Destree Institute (European research centre based in Wallonia) and Head of Millennia 2015. She also serves as head of the Information Society Unit and network administrator at The Destree Institute. Bachelor in Education, qualified teacher of French and of English, she has developed, since 1987, an expertise in ICT networks administration and has contributed, since 1989, to the development of the independent ICT network of the Destree Institute.



Marie-Anne Delahaut
(S.C. and M.C.)

Freelance consultant with expertise in public health, humanitarian crises, Evidence based Decision Support Systems, and Monitoring & Evaluation. She actively supports the Reduction of the Digital Gap and the development of e-Learning, e-Health and use of mobile devices to ensure access to health information in remote areas. She was previously a senior Scientist at the World Health Organization, Geneva and the European Center of Humanitarian Health, Lyon. She is a member of the HIFA2015 Monitoring and Evaluation Working Group and leads the "Women and eHealth" Working Group at Millennia2015.



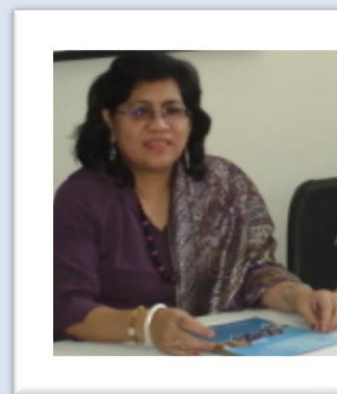
Véronique Thouvenot
(S.C. and M.C.)

Millennia2015

Women actors of development for the global challenges

Millennia2015, Femmes actrices de développement pour les enjeux mondiaux

Gender consultant on Politics, Social & Human Rights for Ministry of Women Empowerment & Child Protection RI and School of Social & Political Science WIDURI; active in Public Policy Forum (PPF) Indonesia. She worked as Health Management Information System Consultant for hospitals 3-8 years; teaching in MIS, system design & information for bachelor, public health graduate students and executives for about 15 years. She is holding Doctor of Dentistry, Master in statistics, and Doctor in Sociology diploma / certificates in human rights, computer programming, system analyst, databases, LAN, knowledge management and web design.



Erna Surjadi
(S.C.)

Cécile Méadel is Professor of sociology at the Ecole des mines de Paris and researcher at the Centre de Sociologie de l'Innovation, a joint research centre between Mines-Paristech and the CNRS. Cécile Méadel has devoted most of her work to the uses of communication technologies, and presently on e.health, information technologies and patients.



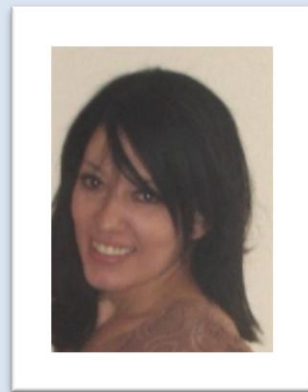
Cécile Méadel
(S.C.)

Millennia2015

Women actors of development for the global challenges

Millennia2015, Femmes actrices de développement pour les enjeux mondiaux

Najet Tenoutit is Program Coordinator at UNDP / World Bank/ CMI in Marseille. She is in charge to organize workshops with Mediterranean countries on digital solidarity. She holds two masters in International Relations & Economy of poverty and Crisis analysis & Geopolitics. She has extensive experience in Public Relations and Communication with NGOs such as OXFAM and research centers such as the European Center of Humanitarian Health.



Najet Tenoutit
(M.C.)

Engineer (MSEE) with specialty in Telecommunications and internationally acknowledged Photographer. Humanitarian worker in Asia, Europe, Australia, N. America and Latin America. Project Founder and Coordinator of SWAN (Save Women And Nurture/Save Wildlife And Nature). www.a-swan.net.



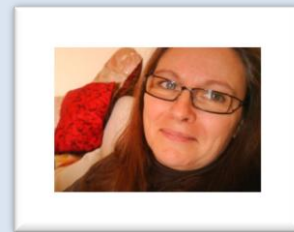
Angie Edmond
(M.C.)

Millennia2015

Women actors of development for the global challenges

Millennia2015, Femmes actrices de développement pour les enjeux mondiaux

Professional proofreader in French. She has kindly accepted to review WeHealth documents in French before publication on the website. She is member of the Methodolgical Committee.



Marie-Christine Desrues
(M.C.)